

PHILIPS
34B2U3600C Curved
Business Monitor



PHILIPS 34B2U3600C Curved Business Monitor User Guide

[Home](#) » [Philips](#) » PHILIPS 34B2U3600C Curved Business Monitor User Guide 

Contents

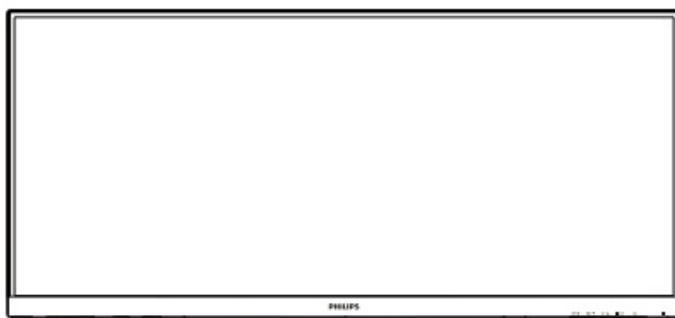
- 1 PHILIPS 34B2U3600C Curved Business Monitor
- 2 WHAT IN THE BOX
- 3 INSTALLATION INSTRUCTION
- 4 Specifications
- 5 Product Information
- 6 Product Usage Instructions
- 7 Frequently Asked Questions
- 8 Documents / Resources
 - 8.1 References

PHILIPS

PHILIPS 34B2U3600C Curved Business Monitor



WHAT IN THE BOX



Power



HDMI



DP



USB A-B



USB C-C



USB C-A

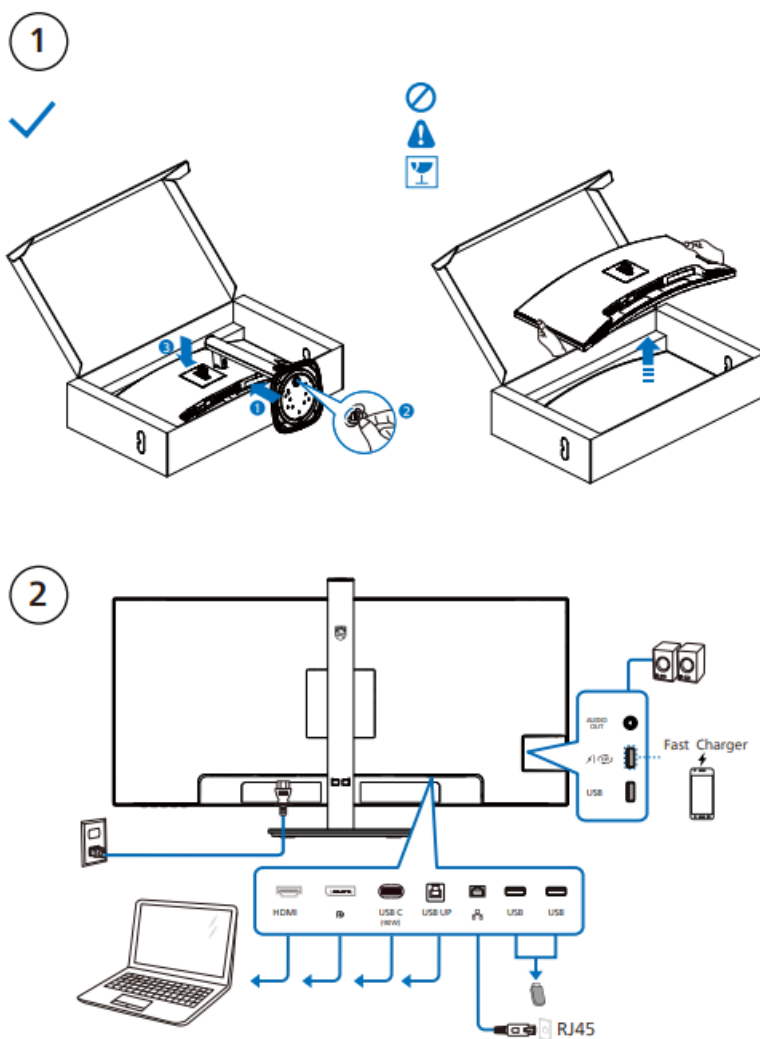


USB C-C/A

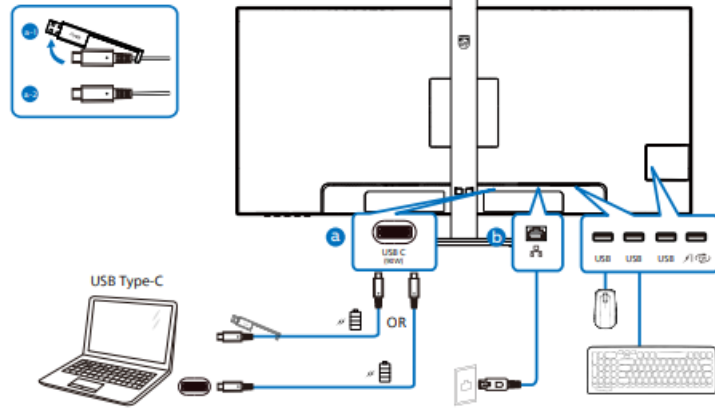
- The images shown are for illustrative purposes only. Actual product and accessories may vary by country or

region. Actual product and accessory shall prevail in kind.

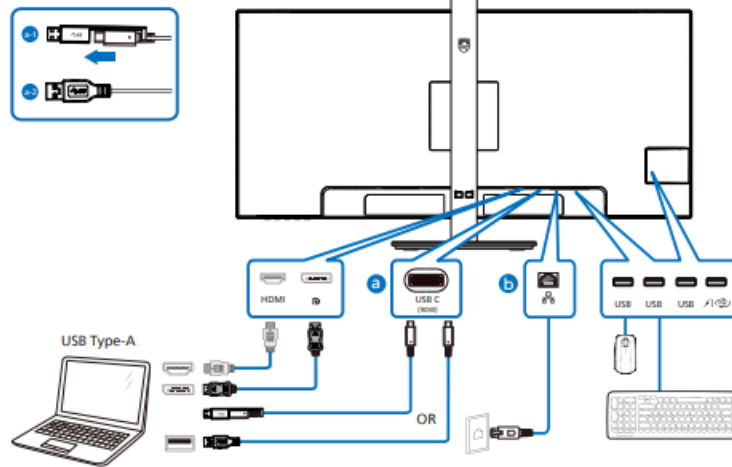
INSTALLATION INSTRUCTION



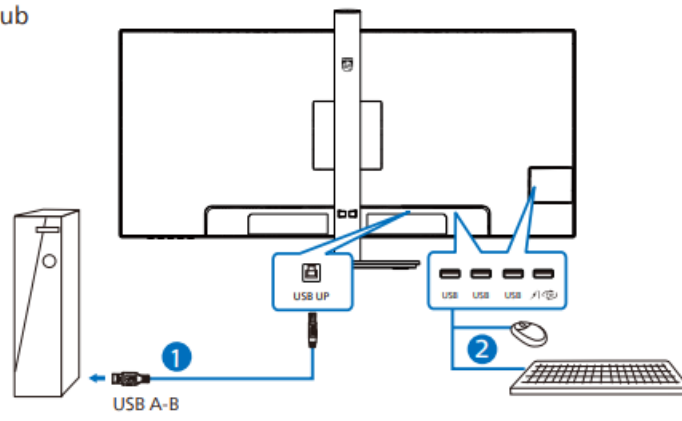
USB docking (USB C-C)



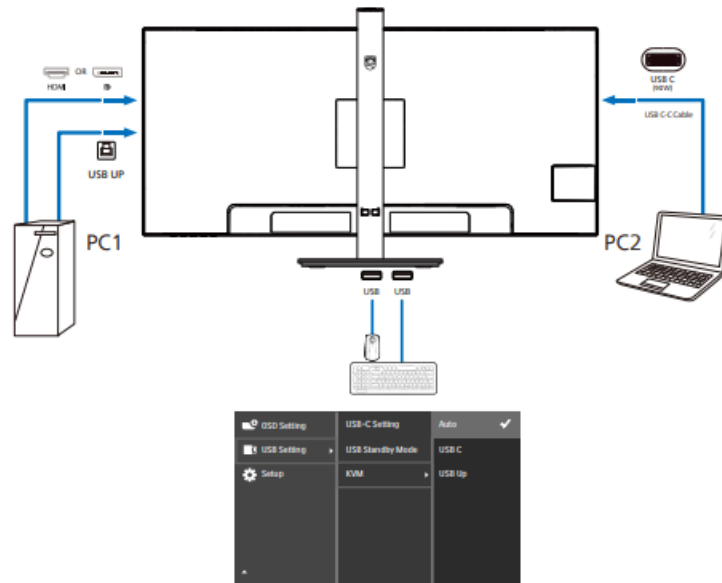
USB hub (USB A-C)



USB hub

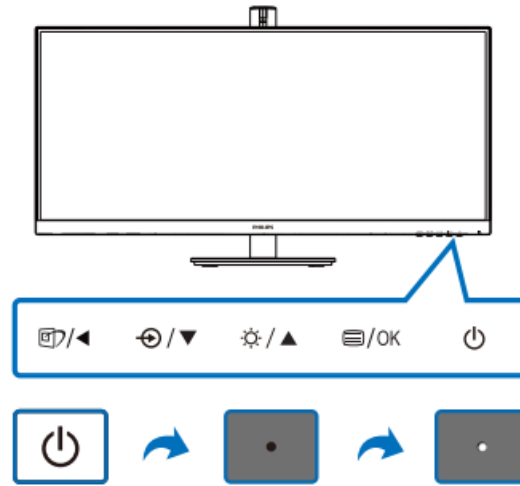


KVM

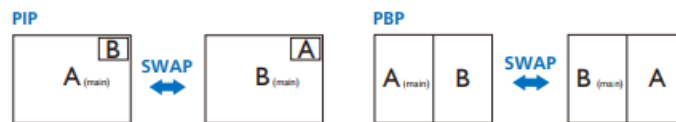


USB Setting	USB C Setting	Auto	✓
USB Setting	USB Standby Mode	USB C	
Setup	KVM	USB Up	

3

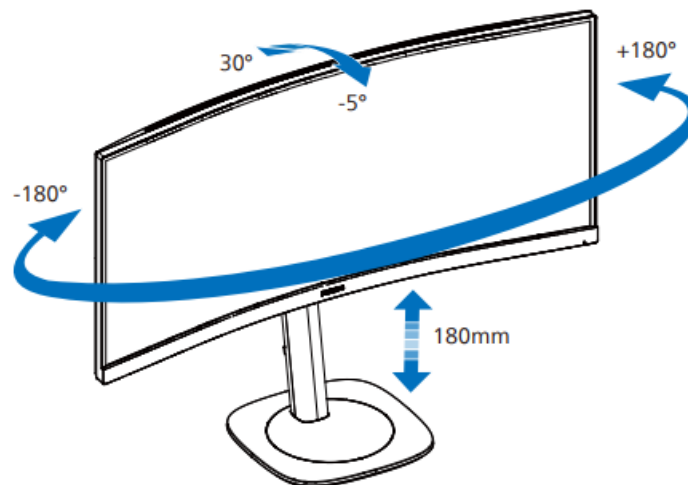


4



MultiView		SUB SOURCE POSSIBILITY (x1)		
MAIN SOURCE (x1)	Inputs	HDMI	DisplayPort	USB C
	HDMI	●	●	●
	DisplayPort	●	●	●
	USB C	●	●	●

5



Register your product and get support at www.philips.com/support



Version: 34B2U3600Q1WWT 2024 © TOP Victory Investments Ltd. All rights reserved. This product has been manufactured by and is sold under the responsibility of Top Victory Investments Ltd., and Top Victory Investments Ltd. is the warrantor in relation to this product. Philips and the Philips Shield Emblem are registered trademarks of Koninklijke Philips N.V. and are used under license. Specifications are subject to change without notice. HOMI® The terms HDMI, HDMI High-Definition Multimedia Interface, HDMI Trade Dress and HDMI Logos are trademarks or registered trademarks of HDMI Licensing Administrator, Inc. www.philips.com

Energy Labelling 34B2U3600C



Specifications

- **Model:** Curved Business Monitor 3000 Series 34B2U3600C
- **Screen Size:** 34 inches
- **Resolution:** 180mm

Product Information

The Curved Business Monitor 3000 Series 34B2U3600C is a high-quality monitor designed for professional use. With a curved screen and a resolution of 180mm, it provides an immersive viewing experience suitable for various tasks.

Product Usage Instructions

Setting Up the Monitor

1. Place the monitor on a stable surface.
2. Connect the power cable to a power source.
3. Connect your computer or other devices using HDMI, DisplayPort, or USB cables as needed.

Adjusting Settings

1. Use the menu buttons on the monitor to adjust settings such as brightness, contrast, and color.
2. Customize display preferences to suit your needs.

Using Multiple Inputs

You can switch between different input sources using the monitor's control panel.

1. Select the desired input source (HDMI, DisplayPort, USB C) using the menu.
2. Enjoy seamless multitasking with Picture-in-Picture (PIP) and Picture-by-Picture (PBP) modes.

Frequently Asked Questions

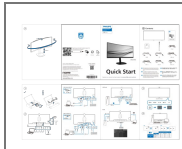
Q: How do I register my product for support?

A: You can register your product and get support by visiting www.philips.com/support and following the instructions provided.

Q: Can I connect multiple devices to the monitor simultaneously?

A: Yes, you can connect multiple devices using HDMI, DisplayPort, and USB ports on the monitor and switch between them using the control panel.

Documents / Resources



[PHILIPS 34B2U3600C Curved Business Monitor](#) [pdf] User Guide

34B2U3600C, 34B2U3600Q1WWT, 34B2U3600C Curved Business Monitor, 34B2U3600C, Curved Business Monitor, Business Monitor, Monitor

References

- [Philips - United States | Philips](#)
- [Philips Customer Service Support - Home | Philips](#)
- [Login](#)
- [User Manual](#)

[Manuals+](#), [Privacy Policy](#)

This website is an independent publication and is neither affiliated with nor endorsed by any of the trademark owners. The "Bluetooth®" word mark and logos are registered trademarks owned by Bluetooth SIG, Inc. The "Wi-Fi®" word mark and logos are registered trademarks owned by the Wi-Fi Alliance. Any use of these marks on this website does not imply any affiliation with or endorsement.