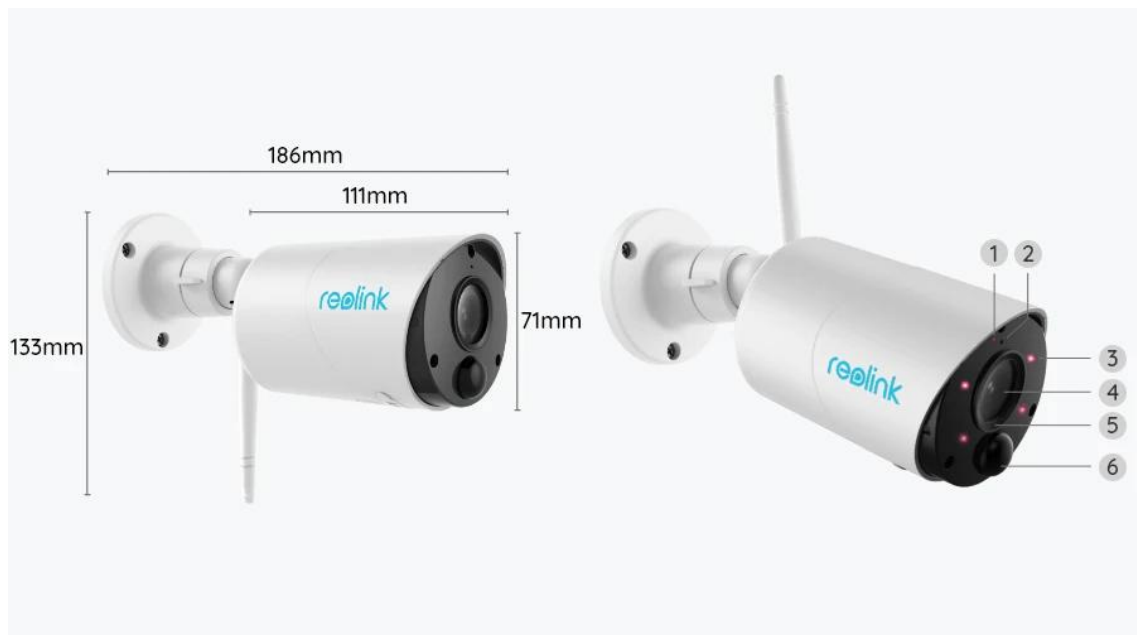


# Argus Eco

Argus Eco works cable-free with a rechargeable battery and reliable Wi-Fi connection. Flexible and weatherproof – you can put it anywhere with 5-minute installation!

## 1. Specs



1	Status LED
2	Built-in Mic
3	4 IR LEDs
4	Lens
5	Daylight Sensor
6	Built-in PIR Motion Sensor



1	On/Off Switch
2	Micro SD Card Slot
3	Speaker
4	Reset Hole
5	Antenna
6	Micro USB Port
7	Battery Status LED

## Status Light

Status Light	Camera Status
Red light	Wi-Fi connection failed
Blue light	Wi-Fi connection succeeded
Blinking	Standby status
On	Working status

## 2. Setup and Install

### Set up the Camera

#### What's in the Box

**Note:** The package content may vary and update with different version and

platforms, please take the below information only for a reference. And the actual package content are subject to the latest information on the product selling page.

Argus Eco



Argus Eco\*1



USB Cable\*1



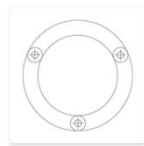
Quick Start Guide\*1



Outdoor Security Mount\*1



Reset Needle\*1



Mounting Template\*1



Surveillance Sticker\*1



Pack of Screws\*1

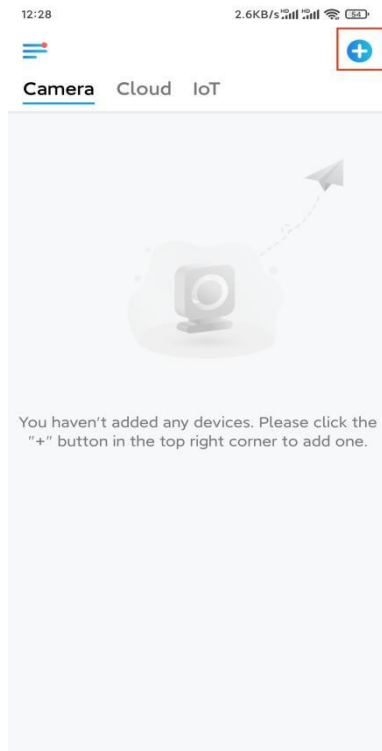
## Set up the Camera on the App

Please follow the steps below to do initial setup for the battery-powered cameras via Reolink App.

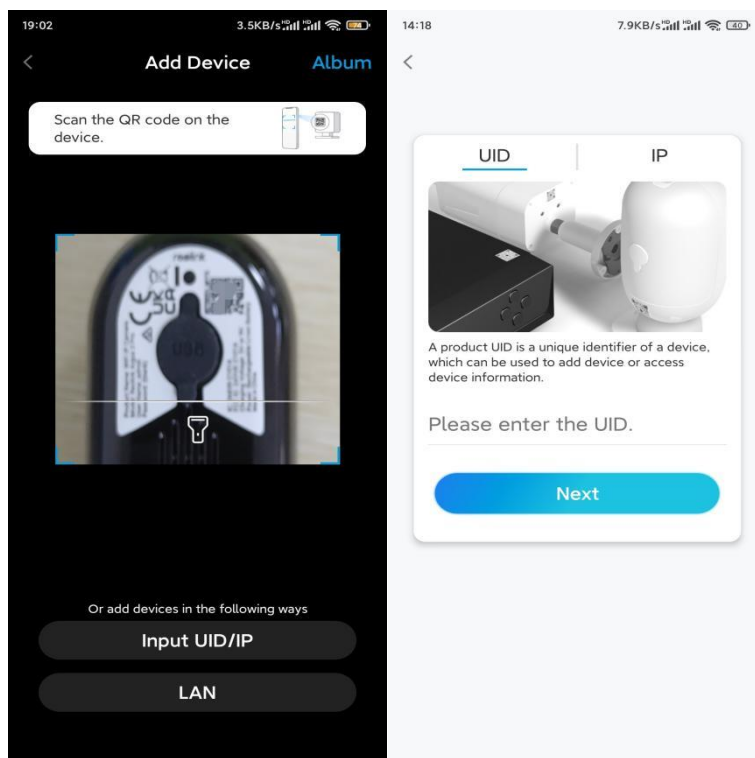
**Step 1.** Power on the camera. Remember to turn on the power switch on the camera before initial setup except for Argus 2 and Argus Pro. After a startup sound, you will hear a **repeated Ding** sound or a **voice prompt**.

**Note:** The voice prompt you will hear may be "Welcome to Reolink, please install Reolink app and scan the QR code on the camera" in multilingual versions, or "please run Reolink app, add the camera and set it up".

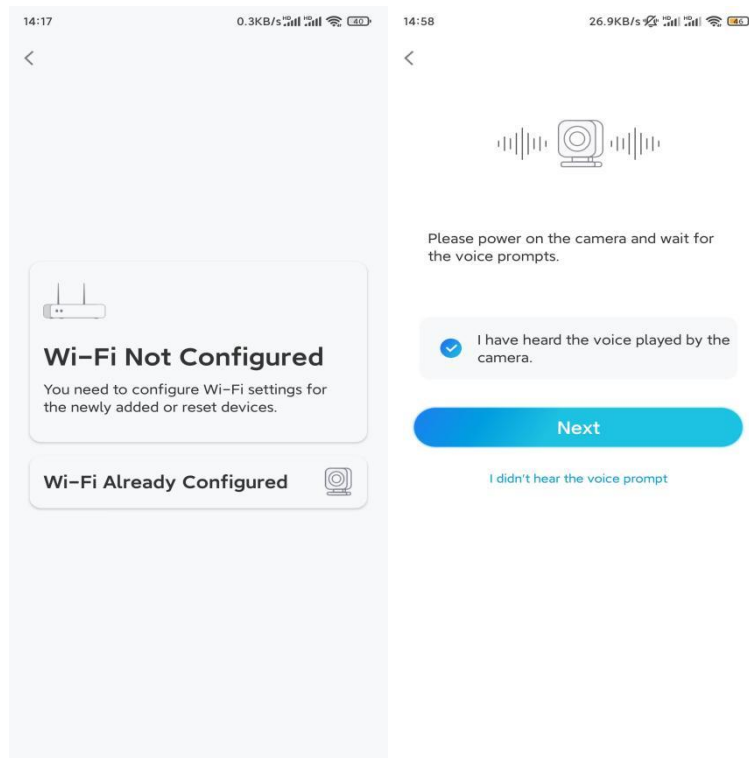
**Step 2.** Tap the icon  in the top right corner to start the initial setup.



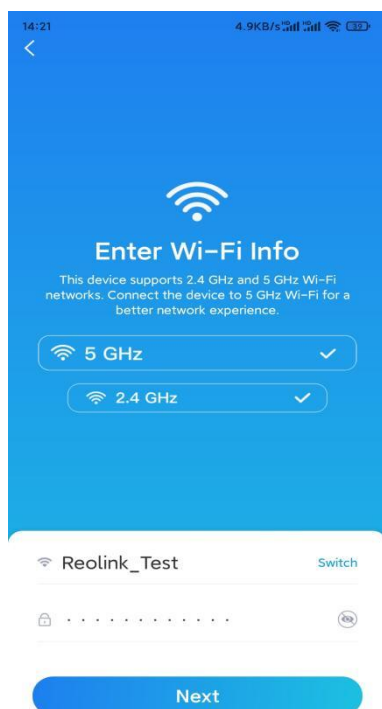
**Step 3.** Scan the QR code on the back of the camera. You may tap **Light** to enable a flashlight when setting up the camera in a dark environment. If the phone doesn't respond, please tap **Input UID/IP** and then manually type in the UID (16-digit characters under the QR code of the camera). Then click **Next**.



**Step 4.** Select **Wi-Fi Not Configured**. If you hear a voice prompt played by the camera, please tick correspondingly and then tap **Next**.

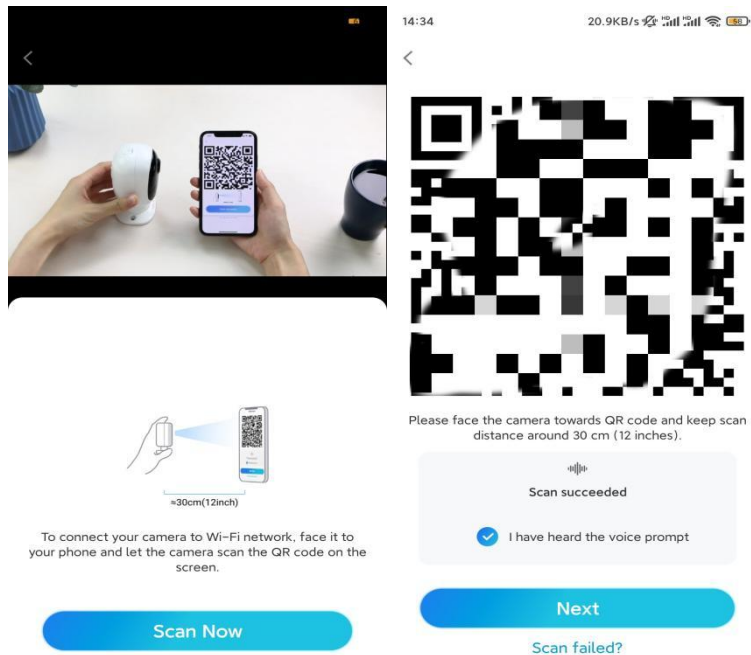


**Step 5.** Enter the WiFi password of the selected WiFi network (you may tap the right eye icon to see and double-check the password) and tap **Next**.

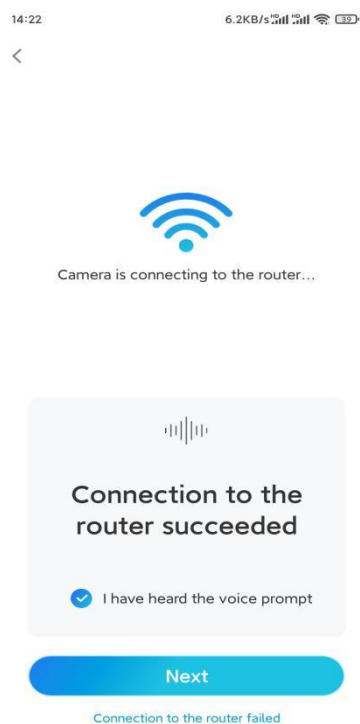


**Note:** Argus Eco only supports the WiFi frequency of 2.4GHz.

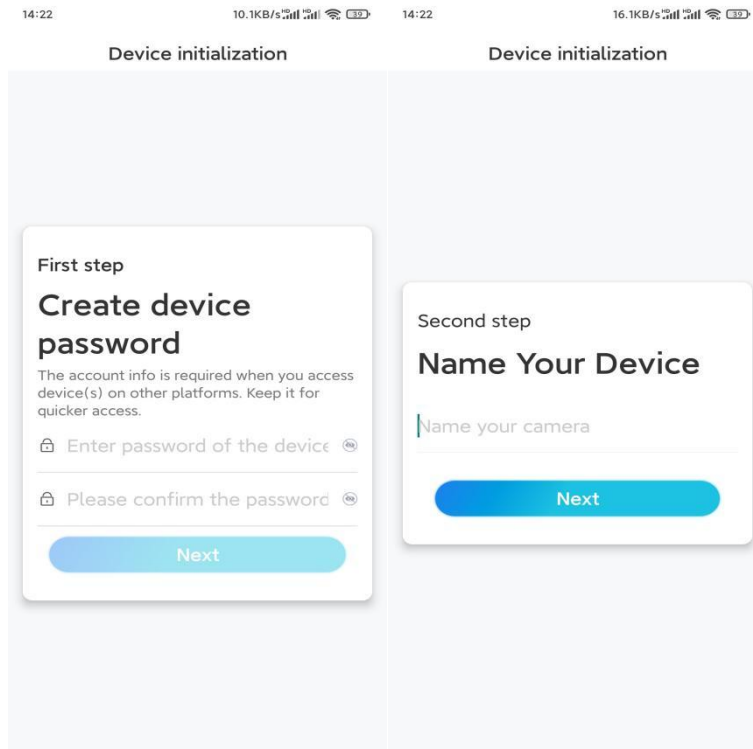
**Step 6.** Tap **Scan Now**. Place the QR code on your phone in front of the camera's lens at a distance of about 30 cm (12 inches) and let the camera scan the QR code. Tick correspondingly and tap **Next**.



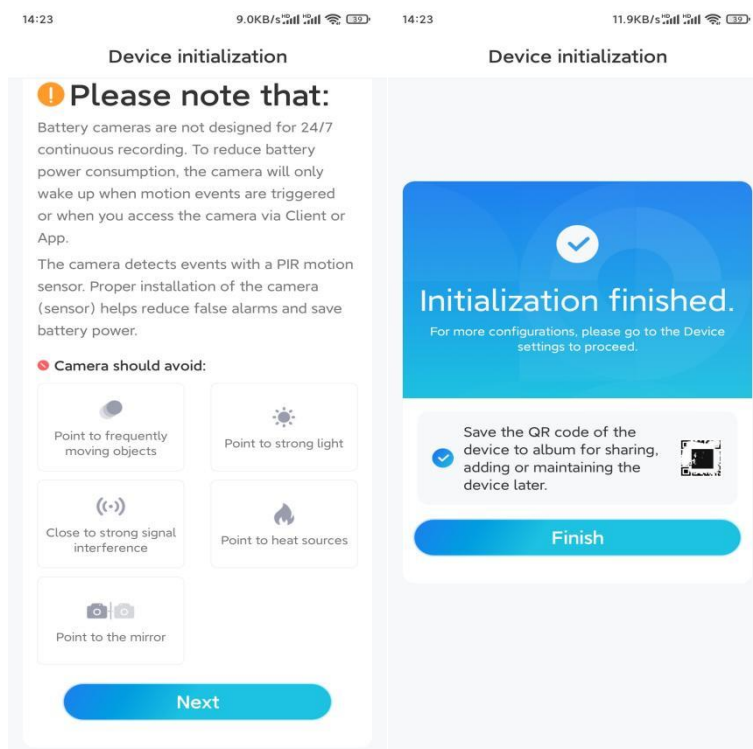
**Step 7.** Wait around 60 seconds for the camera to connect to the router. After hearing "connection to the router succeeded", tick correspondingly and tap **Next**.



**Step 8.** Create a login password and then name your camera.



**Step 9.** Read the note below and then tap **Finish** to complete the initialization of your camera.



Once the initial setup is completed, you may choose a good position to mount your camera.

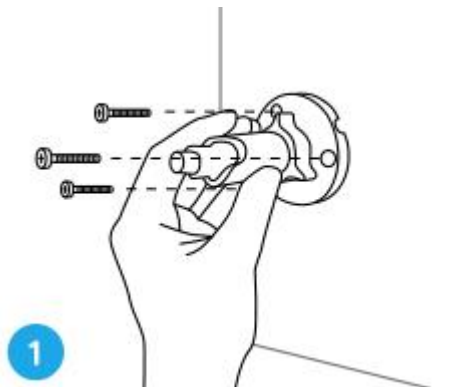
## Install the Camera

We offer you guides on different scenes in which the camera could be installed. Check out them respectively.

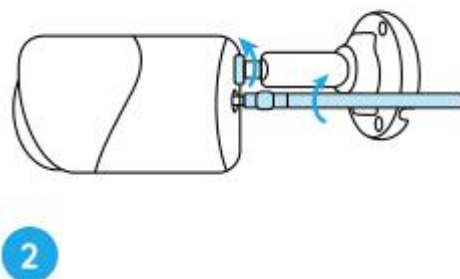
### Mount the Camera to the Wall

**Step 1.** Drill holes and screw the security mount into the wall.

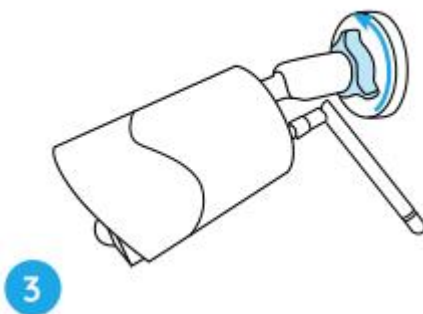
**Note:** If you are mounting the camera on any hard surface, insert plastic anchors into the holes first.



**Step 2.** Screw the antenna to the camera and install the camera to the mount.

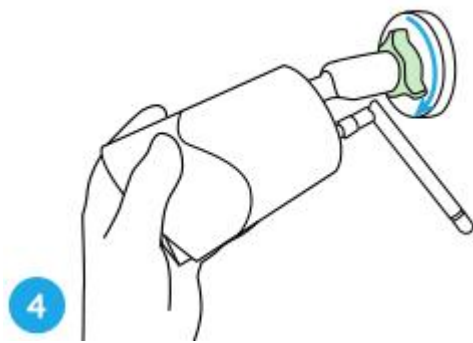


**Step 3.** Loosen the adjusting knob and adjust the camera in the proper direction.



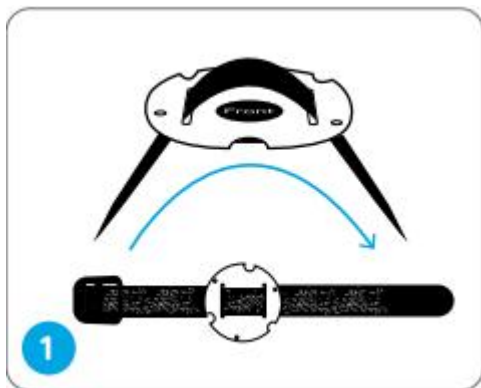
**Step 4.** Tighten the knob to fix the camera.



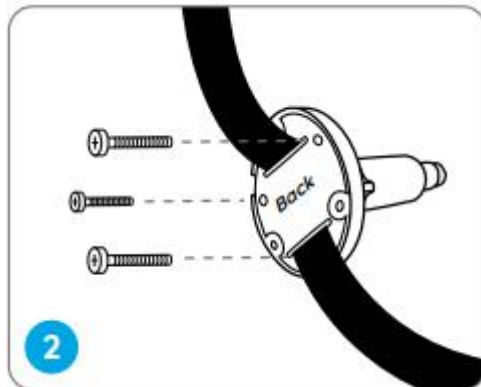


## Attach the Camera to a Tree

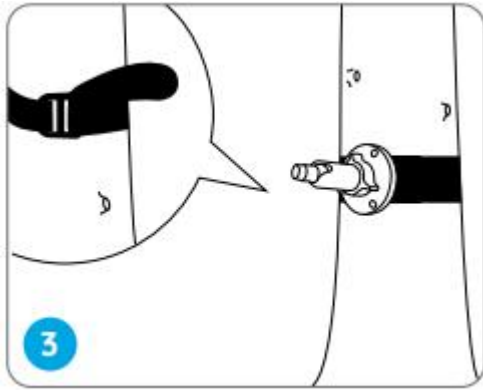
**Step 1.** Thread the strap through the slots of the mounting plate.



**Step 2.** Fix the plate to the mount with screws.



**Step 3.** Fasten the strap onto the tree firmly.



**Step 4.** Attach the camera to the mount in the same way as in mounting it to the wall.

